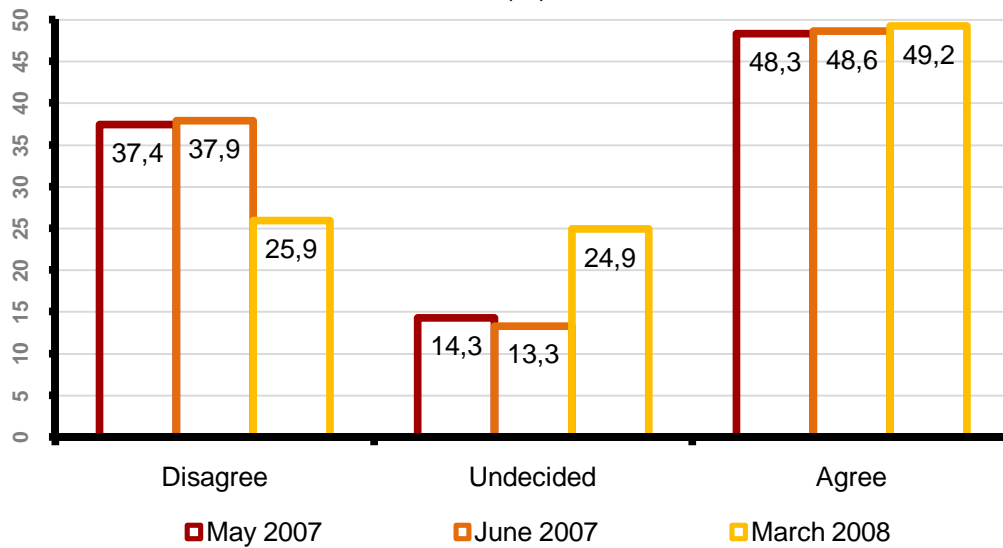


## ATTITUDES TOWARDS TURKEY'S ENTRY TO EUROPEAN UNION AND THE POLITICAL ORIENTATIONS

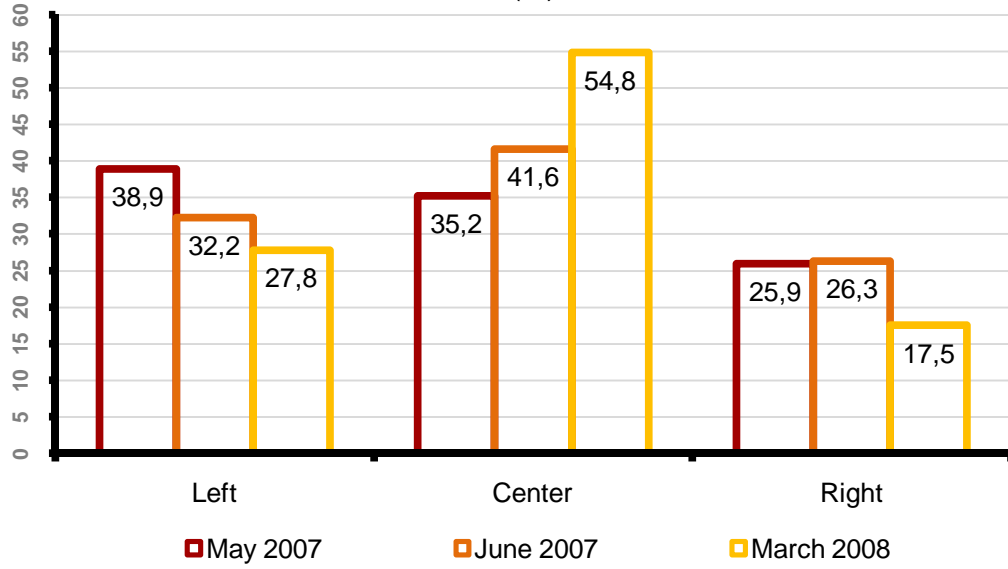
The results regarding the attitudes towards Turkey's entry to European Union, political orientations and the general evaluations about Izmir and the city life are shown below.

RESEARCH PROJECTS WHICH THE RESULTS DEPEND ON			
[MAY, 2007]	"THE POLITICAL ORIENTATIONS AND VOTING BEHAVIORS"	[JUNE, 2007]	"THE SYMBOLS OF IZMIR AND POLITICAL ORIENTATIONS"
	3000 participants from 9 metropolitan districts in Izmir		3064 participants from 9 metropolitan districts in Izmir
[MARCH, 2008]	"THE ECONOMIC ECPECTATIONS, EXPO 2015 & POLITICAL ORIENTATIONS"		
	2006 participants from 18 different districts in Izmir		

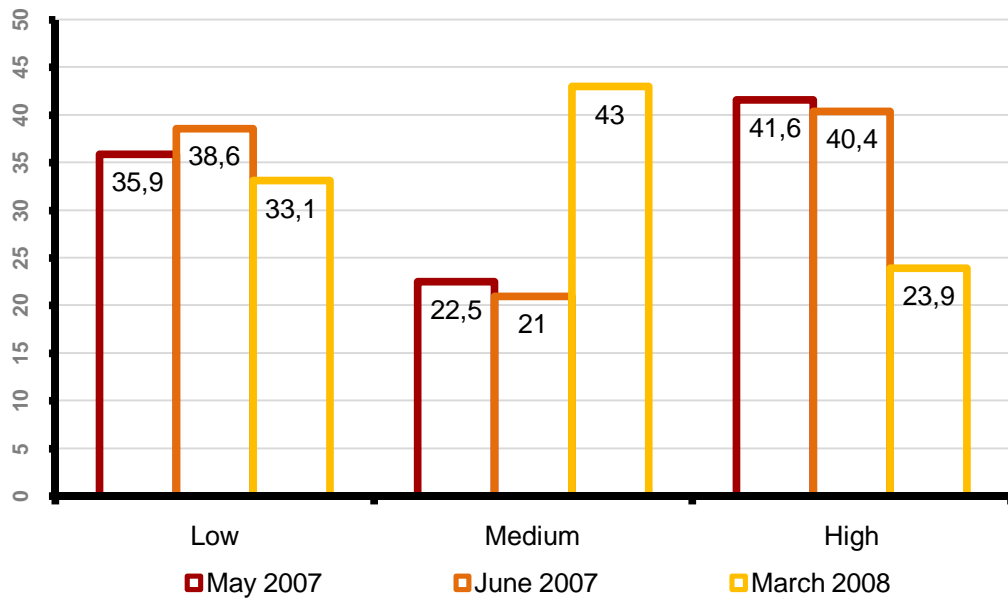
**THE ATTITUDES TOWARDS ENTRY OF TURKEY  
TO EUROPEAN UNION  
(%)**



THE POLITICAL VIEWS OF PEOPLE LIVING IN IZMIR (%)

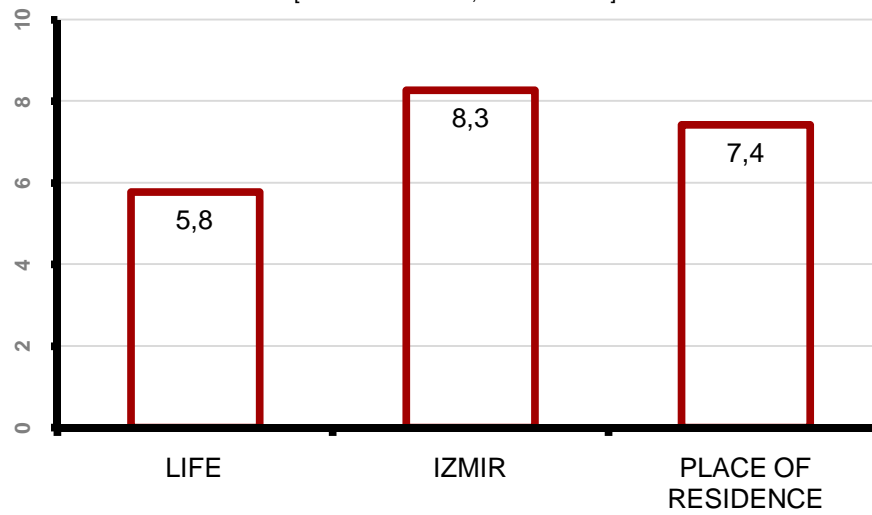


THE IMPACT OF RELIGION ON DAILY LIFE OF PEOPLE LIVING IN IZMIR (%)

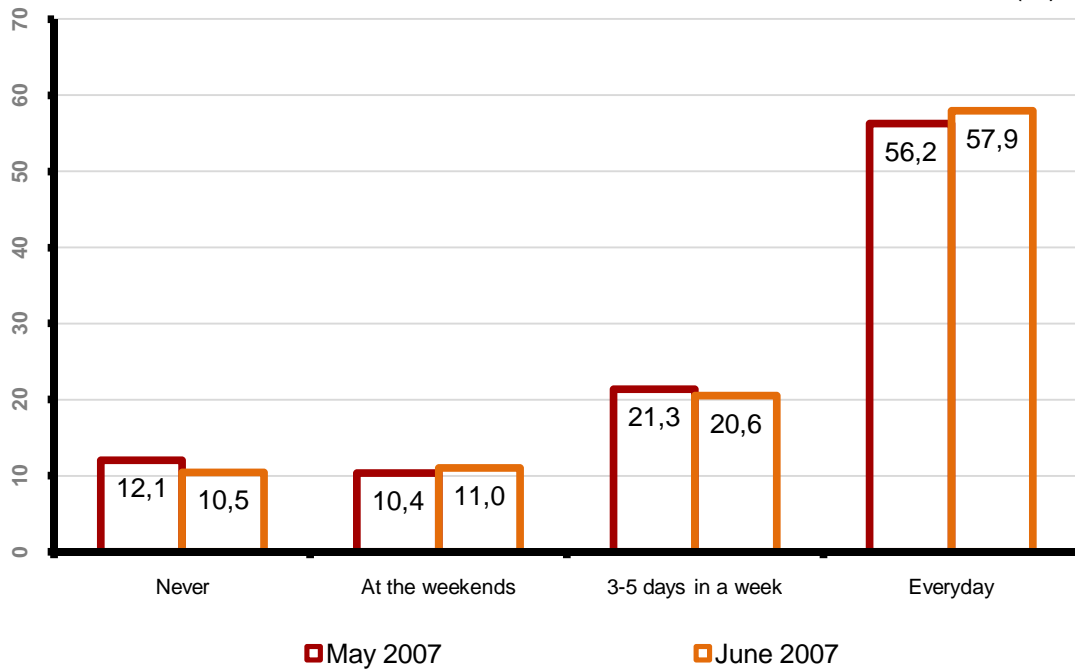


### THE SATISFACTION WITH LIFE AND WITH PLACE OF RESIDENCE IN IZMIR(average points)

(Not satisfied 1 ----- 10 Satisfied)  
[Local Government, March - 2008]

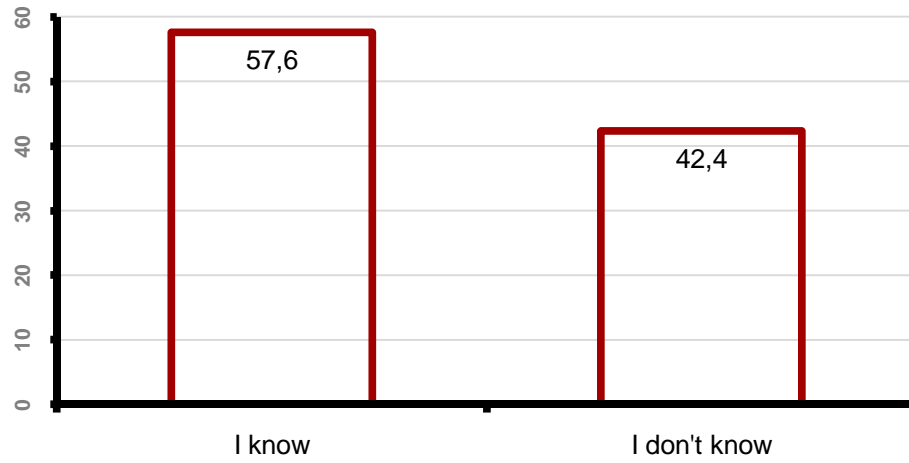


### THE NEWSPAPER READING HABITS OF PEOPLE LIVING IN IZMIR (%)



### DO PEOPLE KNOW THE RECENT DEBATES ON POSSIBLE CONSTITUTIONAL CHANGES IN TURKEY? (%)

[Local Government, March - 2008]



### THE EVALUATIONS OF PEOPLE REGARDING THE DEBATES ON POSSIBLE CONSTITUTIONAL CHANGES(%)

[Local Government, March - 2008]

